

## ACCULAZR™ AL5010

**AL5010** is a high performance industrial laser scanner with cutting edge integrated control technology meeting the demands of existing and new automated facilities.

### EXCELLENT PERFORMANCE

Using multiple lasers, the **AL5010** is the only product in its class to use simultaneous scanning technology with a two laser design to aggressively read low grade barcodes over the largest scan area. With 1200 scans per second, the **AL5010** can support applications with very high transport speeds or small bar codes. With DRX bar code reconstruction technology, tilt angle can be increased for reading damaged or misplaced labels.

### EASE OF USE

The integrated touch button display technology quickly provides information on network connectivity, barcode reading quality, errors, trigger, and transmittal of information to the host. The five LED bargraph provides a quick and simple way to determine the reading performance without using external computers or terminals. Using the upload or download buttons, the settings of the scan head can be uploaded or downloaded with a simple touch of one button. This functionality allows for hot swappable scan head replacement or when quickly installing many scanners at the same time.

### REMOTE ACCESS

With an integrated web server and on-board TCP/IP, the IP address of the scanner can be accessed directly or remotely. The web pages are designed for simple and intuitive setup and monitoring of the system using a simple web browser. Advanced HTML5 is also present, allowing devices such as the iPhone or iPad to connect to the device directly using the same protocol as internet web pages. Screens have been optimized for the iPhone to allow for immediate access to the detailed performance of the system, dramatically reducing the time to troubleshoot any problems.

### INDUSTRIAL FEATURES

With its rugged construction, IP65 protection class, 50° C max operating temperature and internal oscillating mirror, the **AL5010** is purpose built for the most demanding industrial environments. The basic and enhanced wiring boxes are integrated and protected, allow fast and simple installation without additional cables.



## HIGHLIGHTS

- Largest depth of field of any mid-range laser barcode reader on the market
- PackTrack™ advanced tracking allows closer package spacing while maintaining package ID
- Integrated web server with monitoring support for iPhone and iPads
- Multi-language integrated GUI
- Easy “plug and play” replacement
- Flexible connectivity with onbaord EtherNet/IP, Ethernet TCP/IP
- Reliability > 50,000 hours MTBF at 25°C
- No maintenance

## APPLICATIONS

- Automated warehousing
- Picking systems
- Pallet reading
- Label print and apply verification
- Automated shop floor
- Item and part tracking
- Manufacturing process control systems

## TECHNICAL DATA

DIMENSIONS	H 104 x W 130,8 x D 49,9 mm (4.10 x 5.15 x 1.96 in)
WEIGHT	Mounting Base: 0.25-0.34 kg [0.56-0.75 lb] + Scan Head: 0.45 kg [1.0 lb]
CASE MATERIAL	Powder Coated cast aluminum, high impact plastic
OPERATING TEMPERATURE	0 to 50 °C (32 to 122 °F)
STORAGE TEMPERATURE	-20 to 70 °C (-4 to 158 °F)
HUMIDITY	90% non condensing
PROTECTION CLASS	IP65
SCANNING SPEED	Up to 1200 scan/s software selectable
MAX. RESOLUTION	Up to 0.18 mm (7 mils)
MAX. READING DISTANCE	Up to 1200 mm (48 in) on 0.50 mm (20 mils) barcodes
MAX. DEPTH OF FIELD	Up to 838.2 mm (33 in) on 0.50 mm (20 mils) barcodes
APERTURE ANGLE	60 degrees
OSCILLATING MIRROR RANGE	+/- 20 degrees
READABLE CODES	All standard 1D symbologies
MULTILABEL READING	Up to 10 different symbologies during the same reading phase
COMMUNICATION INTERFACES	On board EtherNet/IP, Ethernet TCP/IP, Serial RS232/RS422, DeviceNet, Profibus (See Basic and Enhanced Interface Module Specification)
DEVICE PROGRAMMING	On board HTML/HTML5 Web Server interface
INPUT / OUTPUT SIGNALS	4 programmable I/O relays
POWER CONSUMPTION	<25 W
POWER SUPPLY	12-30 VDC
LASER TYPE	Visible Laser Diode 650nm (Class 1)

## MODELS

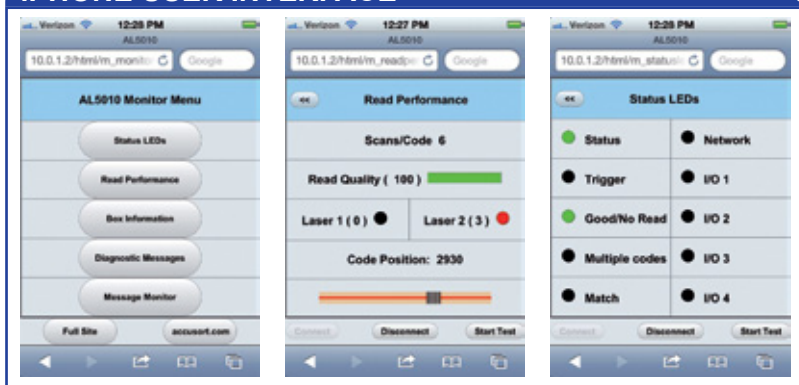
ORDER NO.	DESCRIPTION
1000067750	AL5010: 1 LASER STANDARD DENSITY
1000067751	AL5010: 1 LASER HIGH DENSITY
1000067752	AL5010: 1 LASER HIGH DENSITY NEAR FOCUS
1000067753	AL5010: 2 LASER STANDARD DENSITY
1000067754	AL5010: 2 LASER HIGH DENSITY
1000071183	AL5010: 2 LASER HIGH DENSITY HI/STD DENSITY, NEAR FOCUS

Contact a sales representative for oscillating mirror models

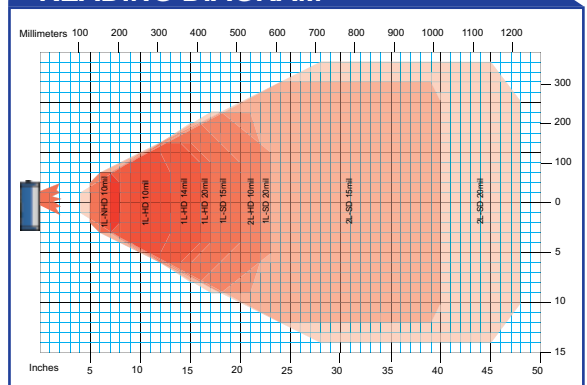
## ACCESSORIES

ORDER NO.	DESCRIPTION
0111623001	AL5010 MOUNTING BASE WITH INTEGRATED 1 METER CABLE
0111623002	AL5010 MOUNTING BASE WITH INTEGRATED 3 METER CABLE
0111631001	BASIC INTERFACE MODULE: TRIG, ETHERNET, (1) Serial Port
0111633001	ENHANCED INTERFACE MODULE: TACH, TRIG, ETHERNET, (2) Serial Ports, (4) I/O
0111633002	ENHANCED INTERFACE MODULE: TACH, TRIG, ETHERNET, (2) Serial Ports, (4) I/O, DEVICENET
0111633003	ENHANCED INTERFACE MODULE: TACH, TRIG, ETHERNET, (2) Serial Ports, (4) I/O, PROFIBUS

## IPHONE USER INTERFACE



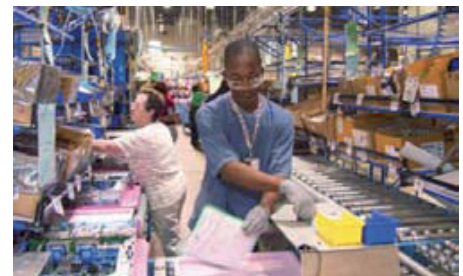
## READING DIAGRAM



Automated Warehousing



Pallet Scanning



Picking System

**ACCUSORT SYSTEMS™**

A brand of  
**DATALOGIC**

Product and Company names and logos referenced may be either trademarks or registered trademarks of their respective companies. We reserve the right to make modifications and improvements.

Rev. 00, 10/2012



9C512000U