

Our Contour measurement for paint plants

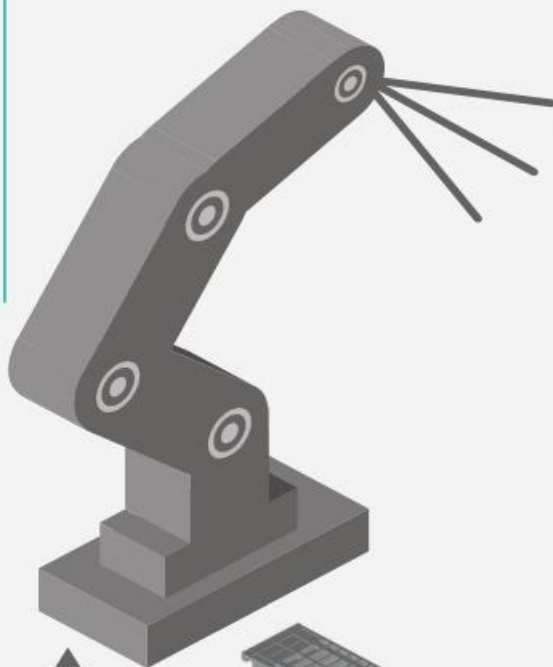


Your satisfaction is our incentive. DUOmetric has been producing and developing innovative light grids and control electronics for over 25 years. Our focus is on customer-oriented solutions of highest quality, manufactured in Germany.

How does contour measurement with light grids work?

4 The painting nozzle is now moved optimally along the contours. This way you can minimize overspray and costs.

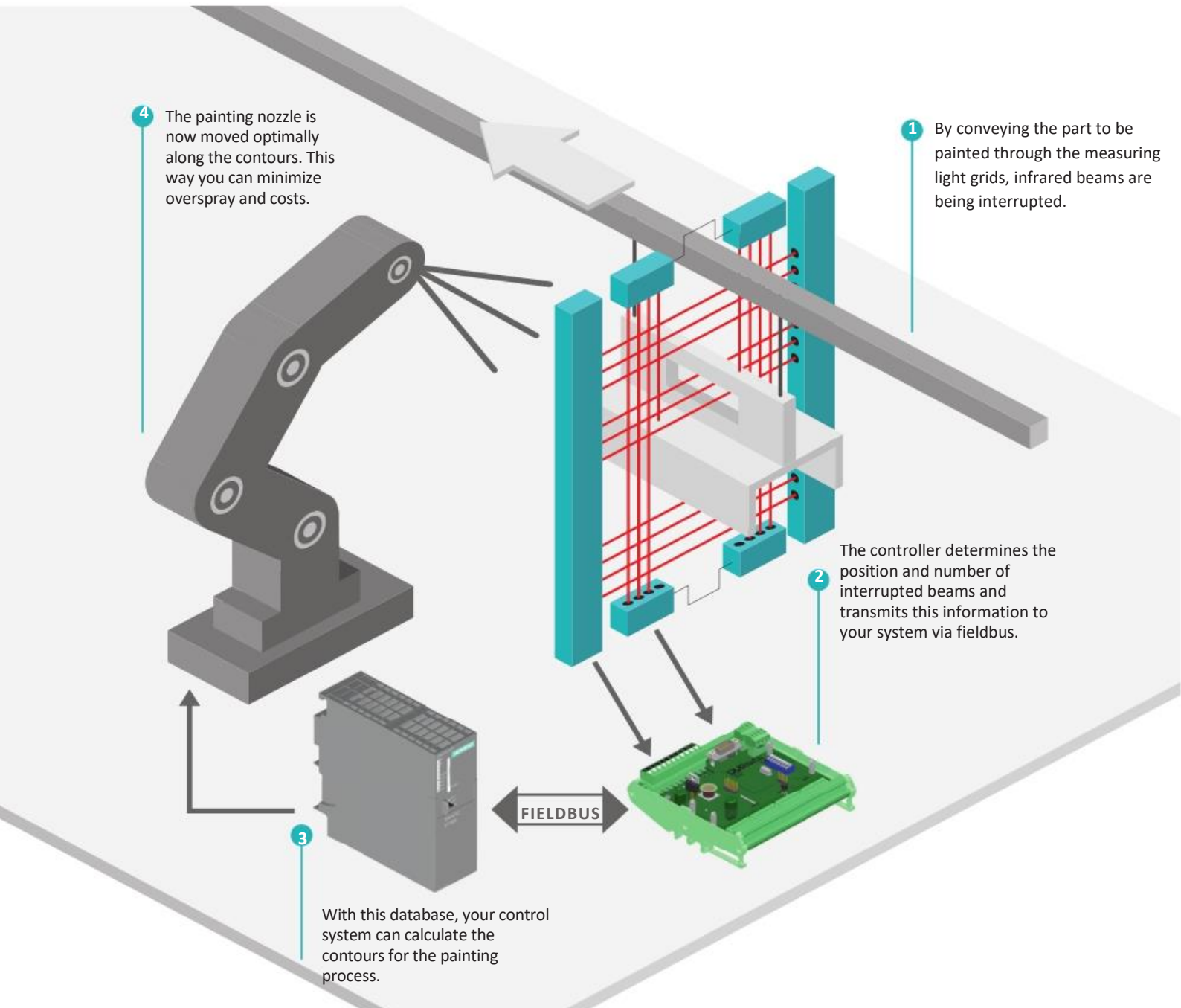
1 By conveying the part to be painted through the measuring light grids, infrared beams are being interrupted.



2 The controller determines the position and number of interrupted beams and transmits this information to your system via fieldbus.

3 With this database, your control system can calculate the contours for the painting process.

FIELDBUS



Your advantages:

- ✓ Automated contour detection of the goods to be painted
- ✓ Minimization of overspray
- ✓ Cost reduction for recycling and disposal
- ✓ Environmental protection
- ✓ Cost-effective solution
- ✓ Robust
- ✓ Flexible adaptation to your needs
- ✓ Plug & Play deployment
- ✓ Flexible beam spacing:
2/5/10/12,5/20/25/50/75/100 mm
- ✓ Monitoring height: 25 ... 5800 mm
- ✓ Range: 0,25 ... 5,8 m

Available interfaces



Let us advice you individually and without obligation!



Martin Winter

Phone +49 8232 95979-21

E-Mail martin.winter@duometric.de



Carmen Heuer

Phone +49 8232 95979-10

E-Mail carmen.heuer@duometric.de